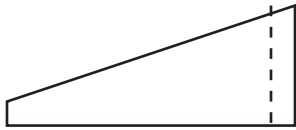


Dresden Plate

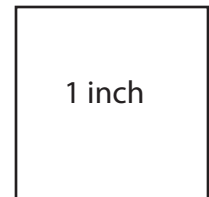
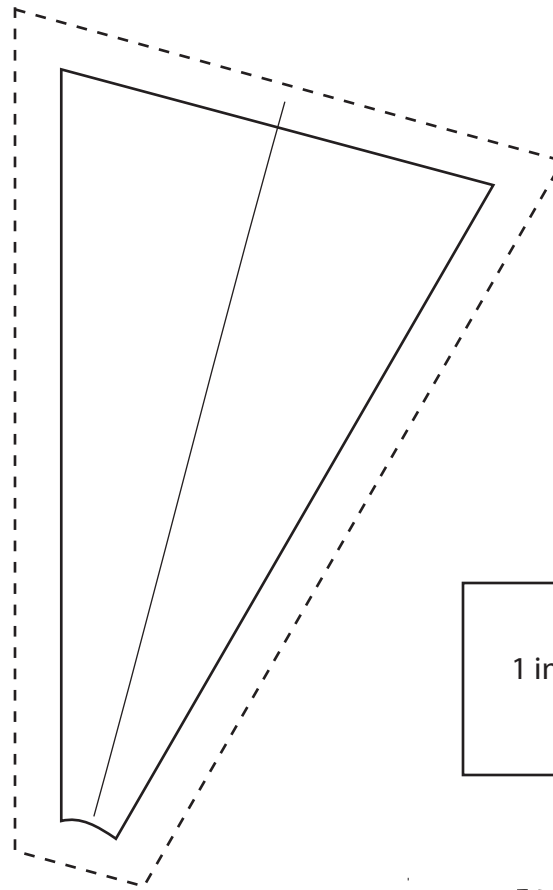
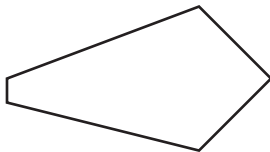
(12 - 30 Degree Sections)

8 1/2" Flower (finished)

- Cut 12 wedges.
- Fold in half with RST.
- Stitch 1/4" seam.

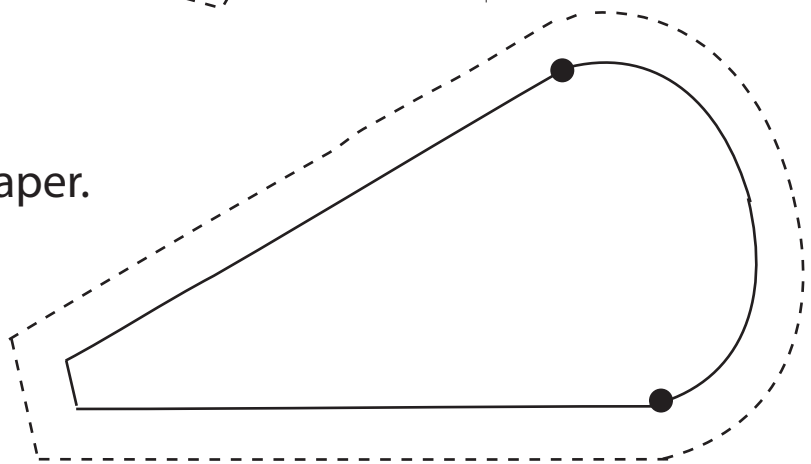


- Trim corner.
- Turn inside out and press.



7 1/4" Flower (finished)

- Cut 12 wedges of freezer paper.
- Press on back of fabric.
- Cut 1/4" seams.
- Baste arc between dots.



Sew wedges together.
Applique circle in center.
Applique to background.



LearnHowToQuilt.com

Master Quilting through Online Classes

*Copyright 2020 ABT All Rights Reserved